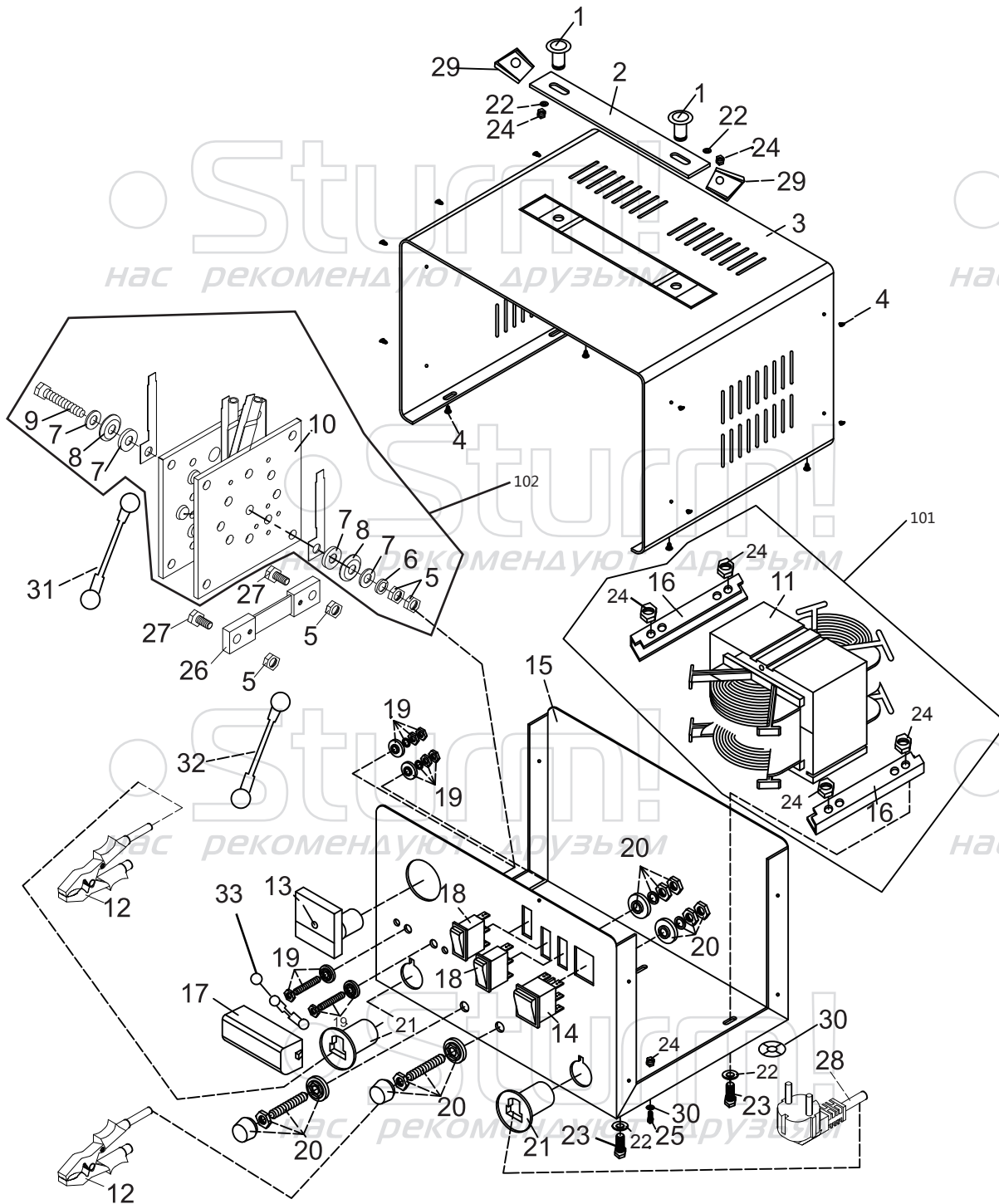


BC1240J



NO.	DESCRIPTION
1	BOLT
2	HANDLE
3	SHELL
4	SCREW
5	NUT
6	SPRING WASHER
7	WASHER
8	INSULATION WASHER
9	SCREW
10	RECTIFIER
11	TRANSFORMER
12	CHARGING CLAMP
13	CURRENT METER
14	POWER SWITCH
15	BASEBOARD
16	TRANSFORMER SUPPORT
17	FUSE COVER
18	CHANGE SWITCH
19	CONNECTOR A
20	CONNECTOR B
21	CABLE ANTI-PULL BLOCK
22	WASHER
23	BOLT
24	NUT
25	BOLT
26	CURRENT SHUNT
27	BOLT
28	CABLE & PLUG
29	HANDLE BUTTON
30	FEET
31	CONNECT WIRE(+)
32	CONNECT WIRE(-)
33	FUSE
101	TRANSFORMER ASSEMBLY(11+16+24)
102	RECTIFIER ASSEMBLY(5+6+7+8+9+10)